



California Collaborative Fisheries Research Program

U.C. Santa Barbara Volunteer Newsletter
A Summary of the 2025 Sampling Season

Greetings **CCFRP Volunteers**,

Our 9th successful season of **Marine Protected Area monitoring** is in the books! Thanks to you, our awesome volunteer anglers, we were able to successfully survey both in and outside of **Anacapa Island SMR/SMCA** and **Carrington Point SMR**. In total, you all spent **372 hours** catching and releasing **4,206 fish** from **41 unique species**. Without you, we wouldn't be able to continue collecting this important data on catch rate, size, species composition, and movement.



Know someone interested in learning more about our program?

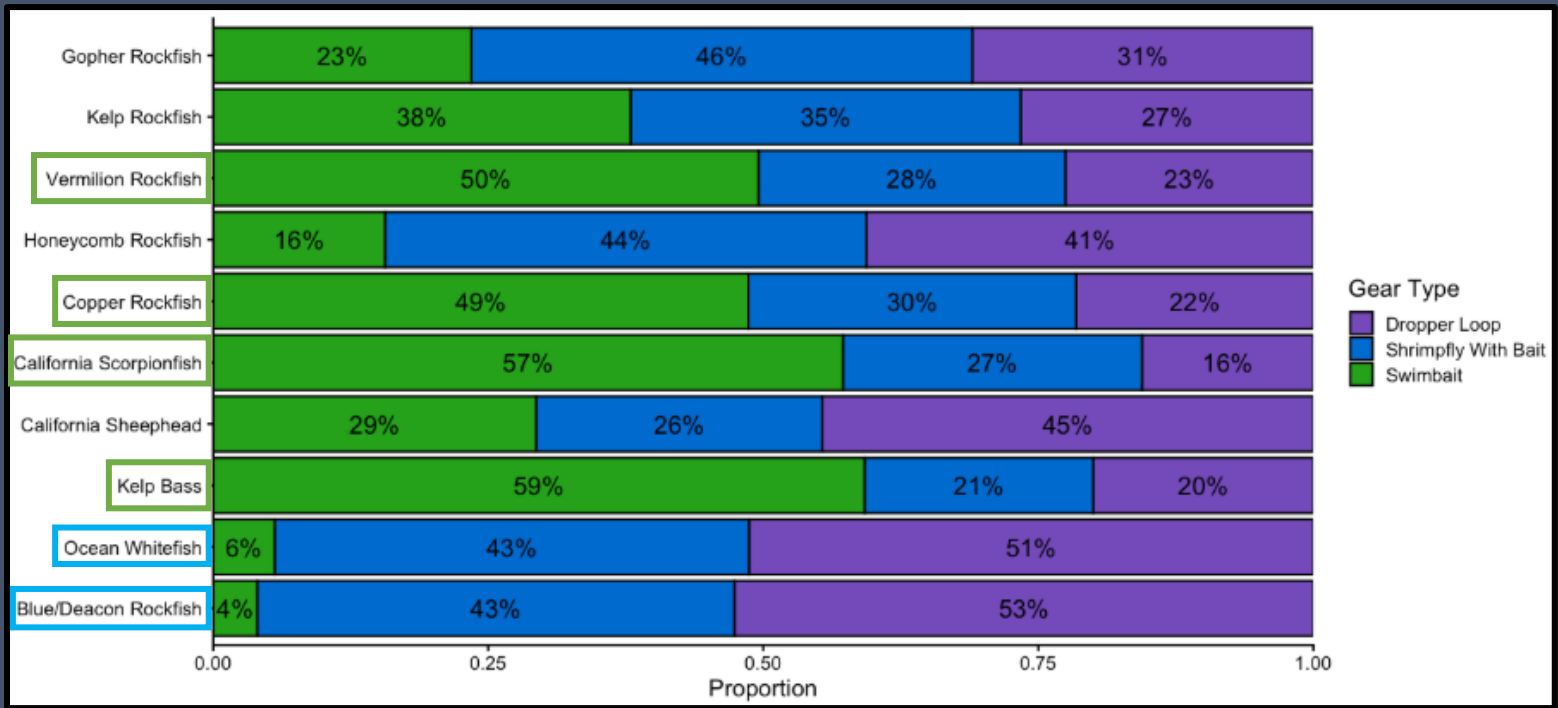
Check out our new website (ccfrp.org) for more info and to volunteer!



CPUE and BPUE by the Numbers

Site	CPUE (Catch per angler/hr)	BPUE (Mass per angler/hr)
Carrington MPA	12.88	9.51
Carrington Reference	6.64	4.21
Anacapa MPA	15.26	8.91
Anacapa Reference	3.70	1.72

Gear Preference By Species



- Generally, aggressive **piscivores** prefer **swimbaits**, while **invert and planktivores** favor **baited tackle setups**.

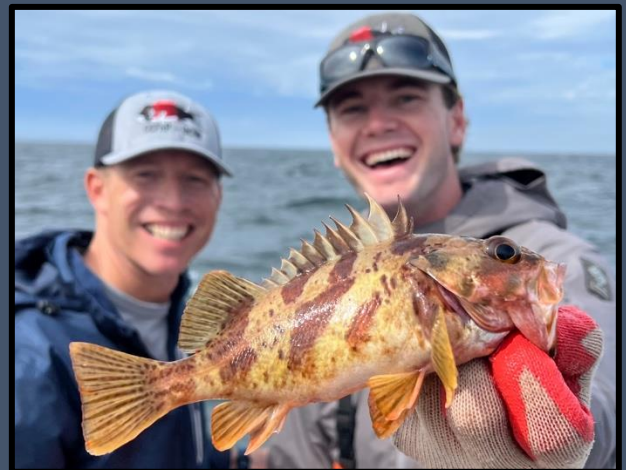
Largest Fishes Caught by Species

1. 31" **Lingcod** (*Ophiodon elongatus*) – caught by **Whitney U.**
2. 28" **CA Sheephead** (*Bodianus pulcher*) – caught by **Eric B.**
3. 26" **Ocean Whitefish** (*Caulolatilus princeps*) – caught by **Carl C.**
4. 24" **Boccacio** (*Sebastes paucipinnis*) – caught by **Dave K.**
5. 22" **Grass Rockfish** (*Sebastes rastrelliger*) caught by **Mike E.**

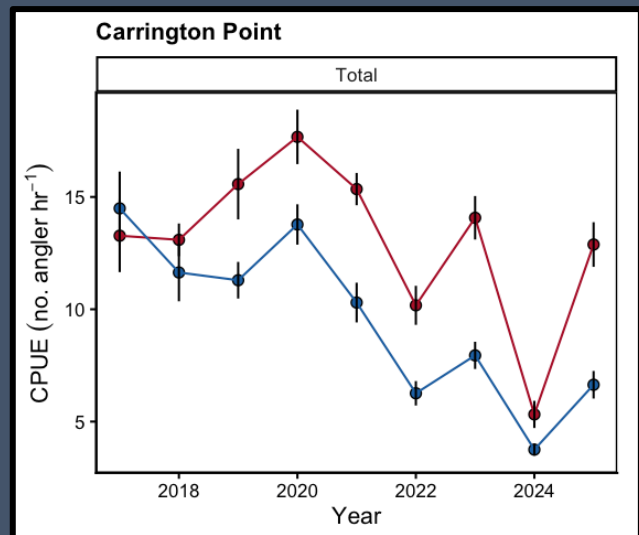
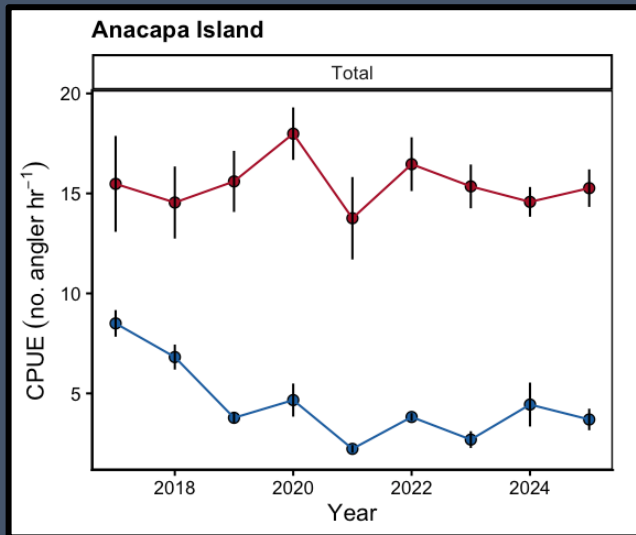


Smallest Fishes Caught by Species

1. 4.5" **Blue Rockfish** (*Sebastes mystinus*) – caught by **Tom H.**
2. 5" **Pacific Sanddab** (*Citharichthys sordidus*) – caught by **Katelin S.**
3. 6.5" **Rosy Rockfish** (*Sebastes rosaceus*) – caught by **Angel V.**
4. 6.75" **Gopher Rockfish** (*Sebastes carnatus*) caught by **Ben M.**
5. 7" **Kelp Bass** (*Paralabrax clathratus*) – caught by **Gavin C.**

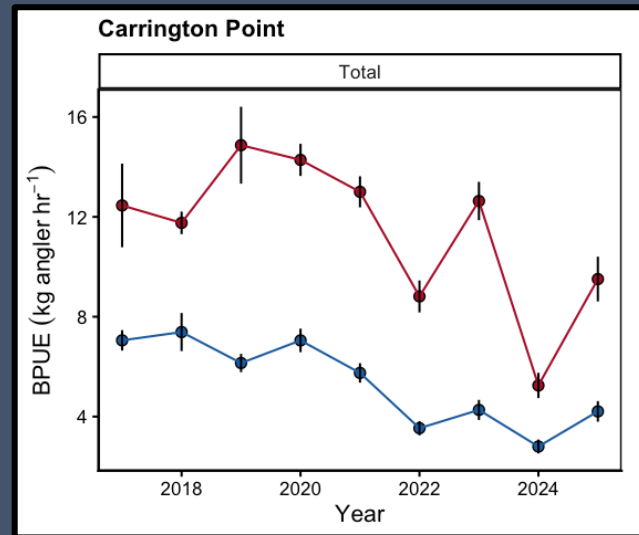
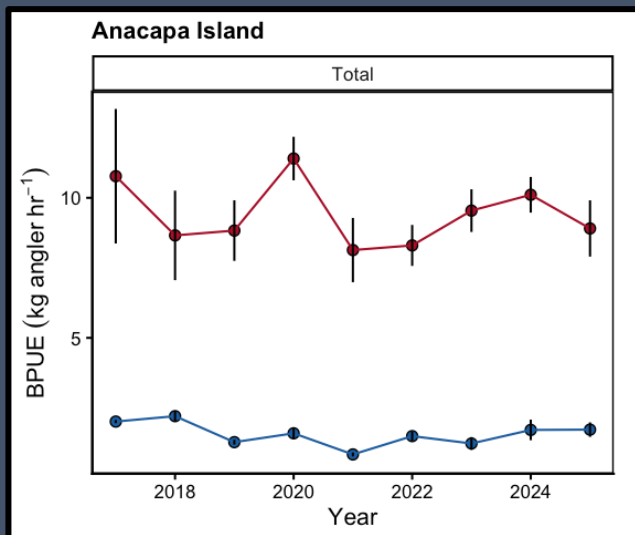


Trends in Catch per Unit Effort (CPUE)



- Our data generally shows **higher catch rates inside MPAs** at both islands.
- Catch **rates rebounded** in 2025 from abnormally low levels at Carrington Point, which were likely caused by a **large pulse of rockfish recruitment**

Trends in Biomass per Unit Effort (BPUE)



- Across all years at both islands, fishes caught inside the MPA **were significantly larger**.
- There is **more variation in both catch and biomass** from year to year at Carrington Point than Anacapa Island.

Updates from UCSB CCFRP Science Crew



Bowen B. shows off a large **Kelp Bass** (*Paralabrax clathratus*) caught by Whitney U.

We're working behind the scenes to prep everything for another year of fall sampling. Keep an eye on your inbox for updates and volunteer sign-ups!

As always, we wouldn't be able to do this awesome work without our partners at **Stardust** and **Aloha Spirit Sportfishing**. Year after year their vessels, captains, and deckhands have been crucial to the success of CCFRP. We're looking forward to working with these operators again in the fall and encourage you to support them in our off-season.

Want to donate to **keep us fishing** in 2026 and beyond? Contact Chris for more information (choneyman@ucsb.edu)

We can't wait to get out on the water for another exciting year of collaborative MPA monitoring with you all.

Our group has been hard at work over the past year, publishing several new papers and spreading the word about CCFRP at outreach events like the Pacific Coast Sportfishing Show.

To check published articles, old newsletters, and more, head over to [our website](#) and click on "Publications and Reports"



Conner J. shows off a CCFRP first: a **Popeye Catalufa** (*Pristigenys serrula*) caught by Lester Y. These nocturnal fish are rare in the shallow waters where we sample, usually living on deeper reefs.



Thanks for yet another great year! 2026 will be **UC Santa Barbara's 10th year of CCFRP**, and we couldn't have done it without our amazing volunteers, like YOU!

Don't forget to take a minute and **follow @Casellelab** on Facebook and Instagram, as well as **@CCFRP** on Facebook, Instagram, and YouTube!

